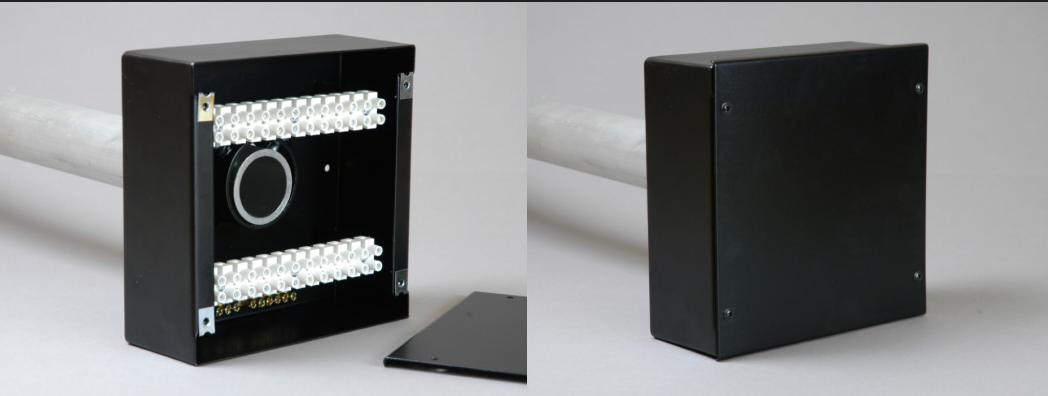


End Box[®] Assembly Instructions

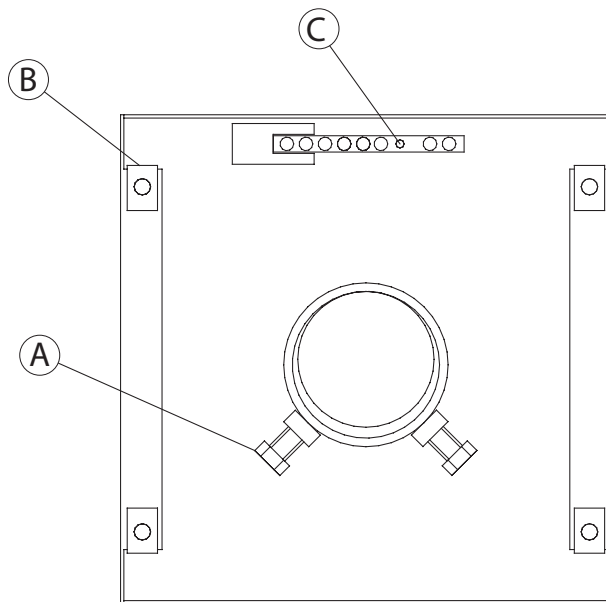


For technical help and advice:
Call +44 (0) 1392 823040

www.robolights.com

Robolights:
 5 G.D. Units, Cofton Road
 Marsh Barton, Exeter, Devon
 EX2 8QW

1

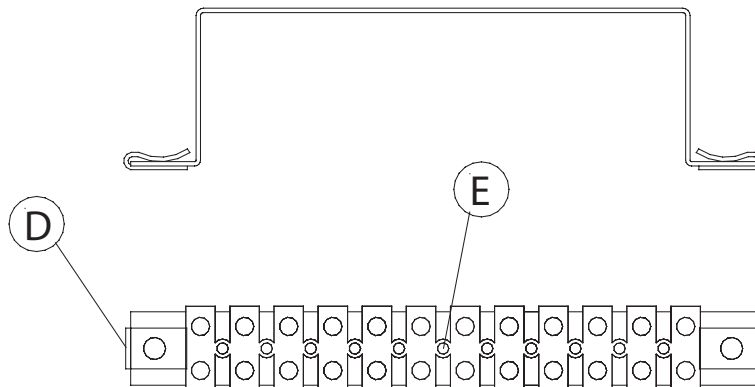


Fit the Earth Bar 'C' in the back of the End Box using the Black M3.5 x 12 screw and Lock Washer. Ensure one end of the Earth Bar fits into the small plate to prevent it rotating, and that the lock washer is fitted on the outside of the End Box.

Fit 4 x U Nuts 'B', with the flat face uppermost, by sliding them over the flanges and engaging them in the holes ready to take the lid screws.

Fit 2 x M8 x 20 set screws 'A' into the tube clamp using a 13mm spanner.

1

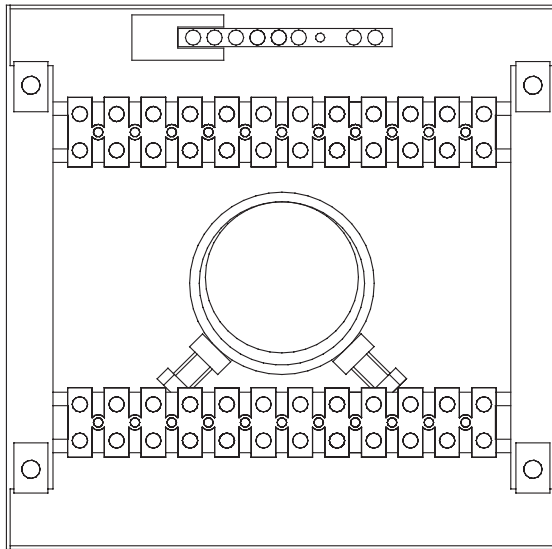


Fit the Terminal Strips 'E' to the Terminal Brackets using 3 x M3 x 16 screws and 3 x Nylock nuts.

Fit 2 x U Nuts, with the flat face downwards, to each Terminal Bracket by sliding them over the edges and engaging them in the holes

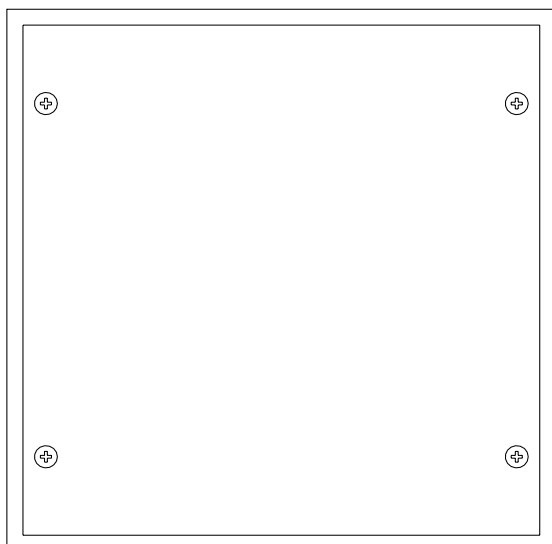
End Box[®] Assembly Instructions

3



Fit the Terminal Brackets into the End Box using the Back Self-Tapping Screws. If a third Terminal Bracket is used this can be fitted after the wiring has been pulled into the tube.

4



After wiring and terminating is complete fit the Lid to the End Box using 4 x Back Self-Tapping Screws.

Important:

The Robolights[®] End Box[®] is intended for OEM use only and should be installed by suitably qualified or experienced persons. The installer must also ensure that the final manufactured assembly conforms and is in accordance with current local wiring regulations.