



# Product Data Sheet

**Product Type**

**Power Socket**

---

**Product Model**

**SAC3MPA-03**

---

**Customer Name**

---

Manufacturer	Prepared	Checked	Approved

Customer	Received	Checked	Confirmed



## Product Data Sheet

Product Type	Power Socket	
Product Model	SAC3MPA-03	
Product Features		
<ul style="list-style-type: none"><li>➤ Indoor power appliance combining inlet and outlet power socket connectors</li><li>➤ Black version of SAC3MPA-02</li><li>➤ Quick and simple locking system</li><li>➤ Rugged and connects reliably</li><li>➤ Match with SAC3FCA and SAC3FCB power plug</li></ul>		



## Product Data Sheet

### Electrical Parameters

Item	Specification
Contacts No.	2+PE
Rated current	20 A
Rated voltage	250 V AC
Contact resistance	$\leq 5 \text{ m}\Omega$
Dielectric strength	4000 V DC
Insulation resistance	$> 1000 \text{ M}\Omega$

### Mechanical Parameters

Item	Specification
Service life	$> 1000$ mating cycles
Cable Size	$2.5 \text{ mm}^2$



## Product Data Sheet

### Material and Environmental Parameters

Item	Specification
Housing	PA
Contacts	Cu alloy
Contact surface	Ag
Temperature range	-30°C ~ +80°C

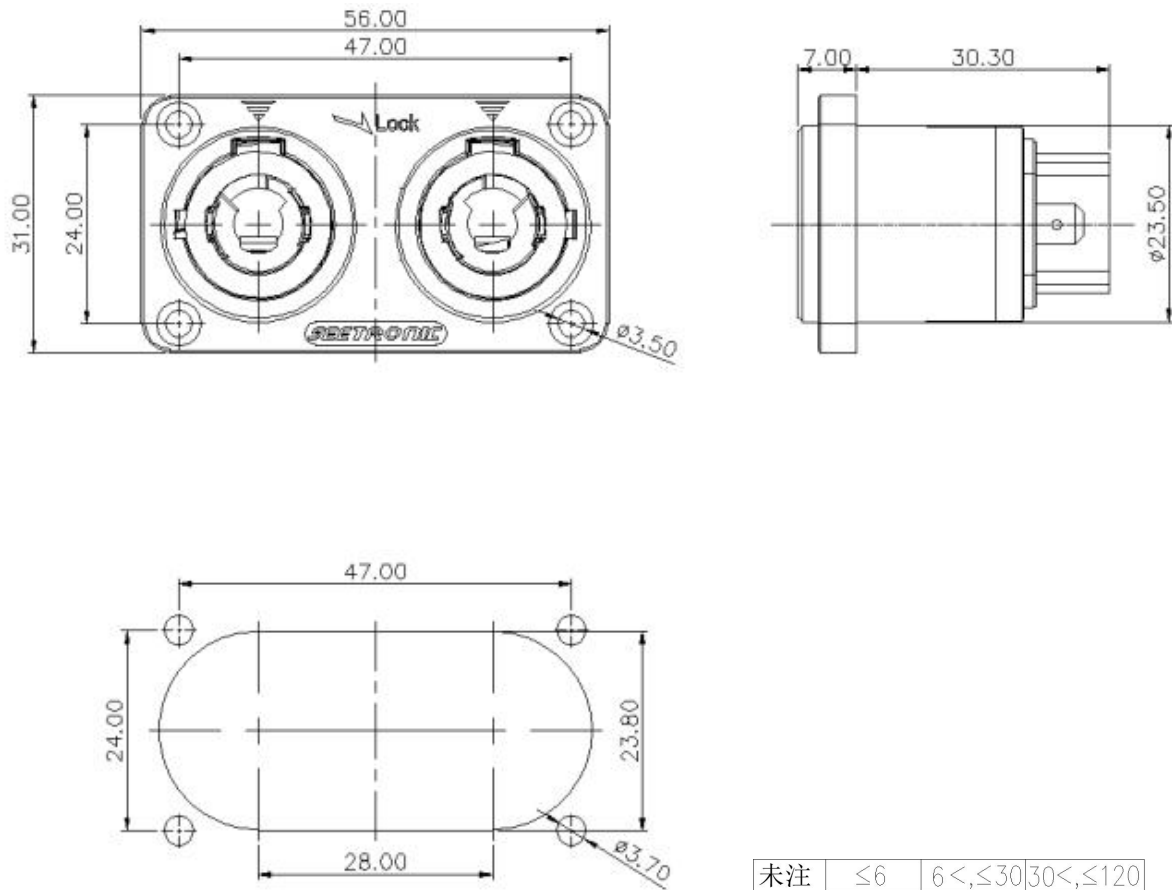
### Standard

Standard	IEC61984
----------	----------



## Product Data Sheet

### Product Drawing



Panel cut-out size

Unit: mm

未注	$\leq 6$	$6 < , \leq 30$	$30 < , \leq 120$
公差	$\pm 0.10$	$\pm 0.30$	$\pm 0.30$

### Packaging Method

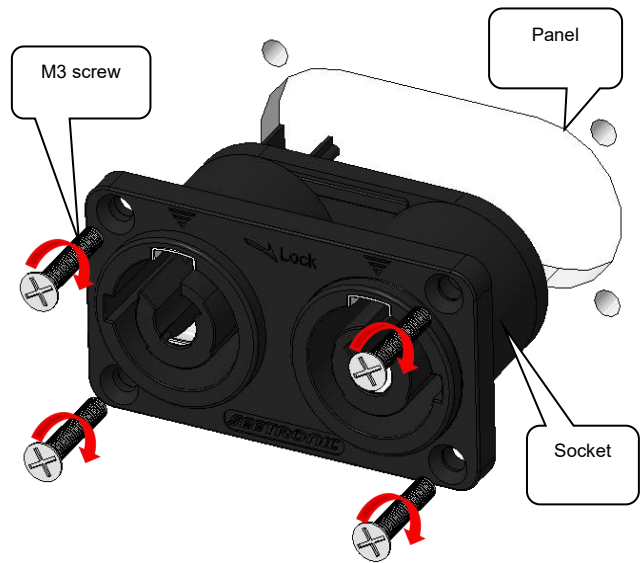
Blister box, 40 pcs per inner carton, 5 inner cartons per master carton (200 pcs per master carton)



## Product Data Sheet

### Assembly Instructions

Install the socket in front of the panel opening, then tighten the screws clockwise with a torque of 0.5 Nm



Terminal wiring method

