



Product Data Sheet

Product Type IP65 XLR Socket

Product Model J3F2C-W-B (03)

Customer Name _____

Manufacturer	Prepared	Checked	Approved

Customer	Received	Checked	Confirmed



Product Data Sheet

Product Type	IP65 XLR Socket	
Product Model	J3F2C-W-B (03)	
Product Features		
<div>➤ The industry’s first waterproof XLR socket with IP65 waterproof rating</div> <div>➤ 3-pin XLR waterproof male socket with zinc alloy and black plated housing and gold plated contacts</div> <div>➤ Air-proof treatment at the rear part to prevent water vapor from entering inside the equipment</div> <div>➤ D-shape metal shell with industry standard D-type installation dimensions provides installation compatibility</div> <div>➤ Install from the front of the panel</div> <div>➤ Solve to the fullest degree the fast connection requirements of the DMX lighting industry in outdoor conditions for signal input and output</div>		



Product Data Sheet

Product Parameters

Item	Specification
Connection type	XLR
Gender	Male

Electrical Parameters

Item	Specification
Capacitance between contacts	$\leq 4 \text{ pF}$
Contact resistance	$\leq 5 \text{ m}\Omega$
Dielectric strength	1500 V DC
Insulation resistance	$> 10 \text{ G}\Omega$ (initial)
Rated current per contact	16 A
Rated voltage	$< 50 \text{ V}$



Product Data Sheet

Mechanical Parameters

Item	Specification
Insertion force	≤ 20 N
Withdrawal force	≤ 20 N
Service life	> 1000 mating cycles
Chassis shape	D-size

Material and Environmental Parameters

Item	Specification
Contacts	Cu alloy
Contact plating	Au
Insert	PA
Housing	Zinc alloy
Housing plating	Black plating
Flame-retardant grade	UL 94 HB
Protection class	IP65
Temperature range	-30°C ~ +80°C

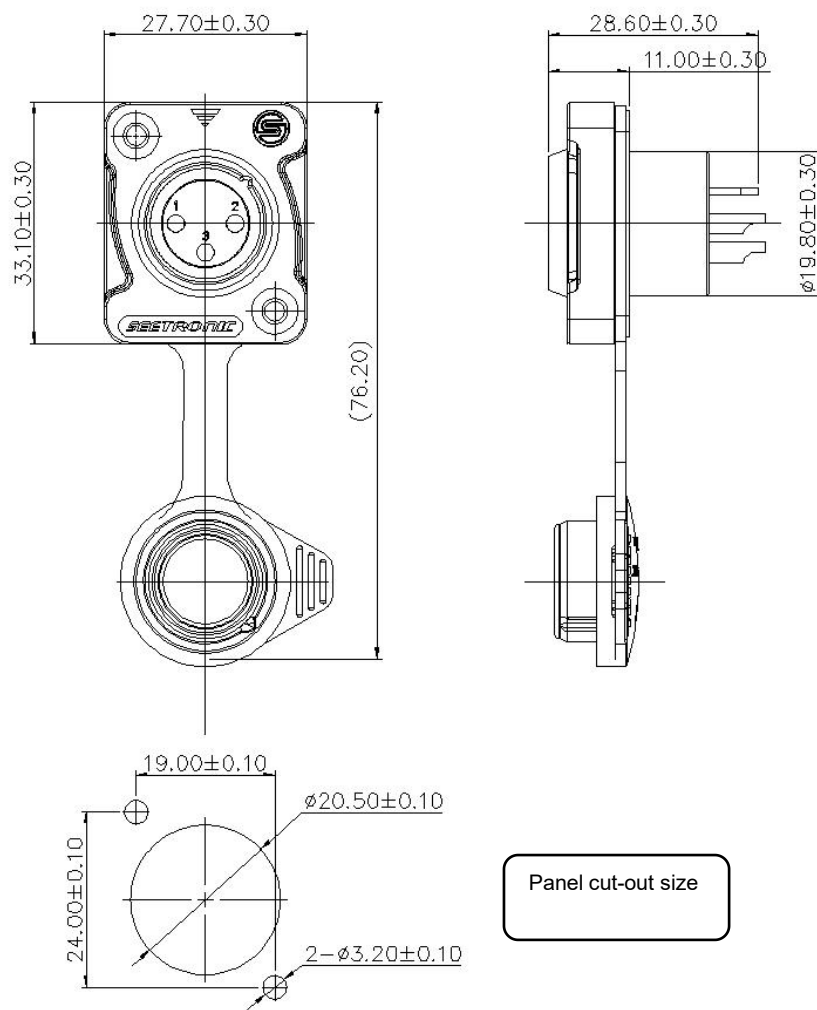


Product Data Sheet

Standards and Certifications

Standards	IEC 61076-2-103
Solderability	IEC 68-2-20

Product Drawing



Panel cut-out size



Product Data Sheet

Packaging Method

Blister box packaging (include waterproof gasket cover)

20 pcs per blister box, 100 pcs per inner carton, 4 inner cartons per master carton (400 pcs per master carton)

Accessory

- | | |
|------------------------------------------|-------------------------------------------------------------|
| <input type="checkbox"/> No accessories | <input type="checkbox"/> Back fastener plate |
| <input type="checkbox"/> Screws and Nuts | <input checked="" type="checkbox"/> Waterproof gasket cover |

Assembly Instructions

Put the waterproof gasket cover on the rear side of the socket and then install on the front of the panel. Finally, tighten the screws with 0.5 Nm torque in clockwise direction.

