

dbx 676 Quick Start Guide



WHAT'S IN THE BOX

- 676 Tube Microphone Preamp Channel Strip
- Power Cable
- 4 Rack Mount Screws & Washers

REGISTER YOUR PRODUCT

Register your product at
http://dbxpro.com/en-US/support/warranty_registration.



Scan codes with a QR scanner app on your mobile device to go straight to web URLs.

GET THE OWNER'S MANUAL

Get the owner's manual at
<http://dbxpro.com/en-US/products/676#documentation>.



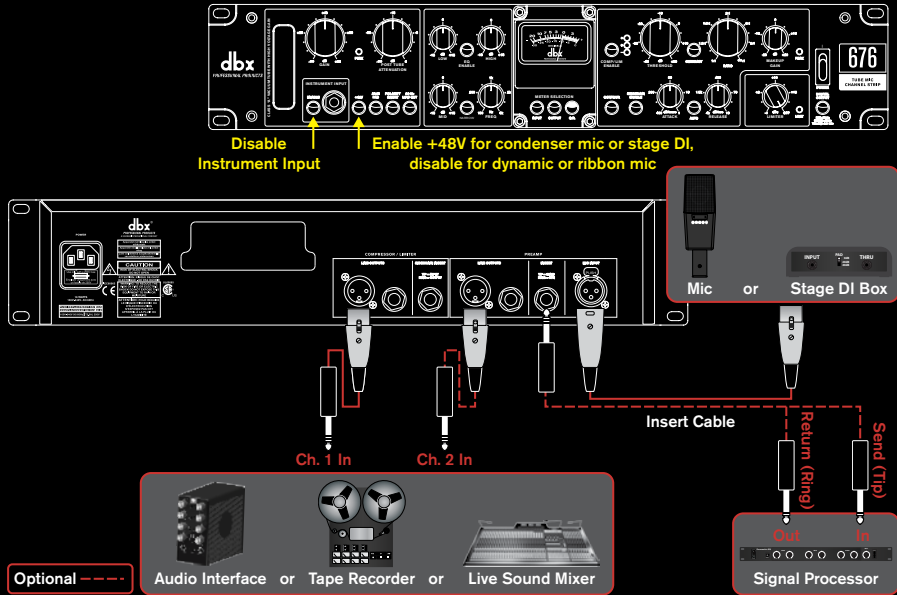
- 1** Power down interconnecting equipment and make connections to the 676 (see reverse side for connection diagrams).
- 2** Turn down the **GAIN** and **POST TUBE ATTENUATION** controls, connect the included IEC power cable, then switch on the front-panel power switch. Now power on all interconnected equipment.
- 3** Disable the EQ and Compressor/Limiter by disengaging the **EQ ENABLE** and **COMP/LIM ENABLE** buttons.
- 4** If connecting a bass or guitar to the INSTRUMENT INPUT jack on the front panel, engage the INSTRUMENT INPUT **ENABLE** button. If connecting to the MIC INPUT jack on the rear panel, disengage the INSTRUMENT INPUT **ENABLE** button.
- 5** Engage the **+48V** button only if a condenser microphone which requires it is connected to the 676. If connecting a ribbon or dynamic microphone, ensure the **+48V** button is disengaged before connecting the microphone.
- 6** With source signal present, raise the **GAIN** control until the input PEAK LED lights then lower it slightly so the LED goes out. If the PEAK LED lights when the **GAIN** control is set very low, engage the **20dB PAD** button then try again.
- 7** Raise the **POST TUBE ATTENUATION** control for the desired output level, making sure not to clip the input on the next device. For cleaner tones, lower the **GAIN** control and raise the **POST TUBE ATTENUATION** control. For warmer tones, raise the **GAIN** control and lower the **POST TUBE ATTENUATION** control.
- 8** Engage the **POLARITY INVERT** button if required for the application. Engage the **80Hz** button if the source signal does not contain useful content below 80 Hz.
- 9** To use the EQ, engage the **EQ ENABLE** button then adjust the EQ controls to taste. If no EQ is required, leave the **EQ ENABLE** button disengaged.
- 10** To use compression and/or limiting, ensure you're connected to the COMPRESSOR / LIMITER output then enable the compressor/limiter with the **COMP/LIM ENABLE** button and adjust the compressor/limiter settings to taste.

Enjoy! Thanks for choosing dbx.

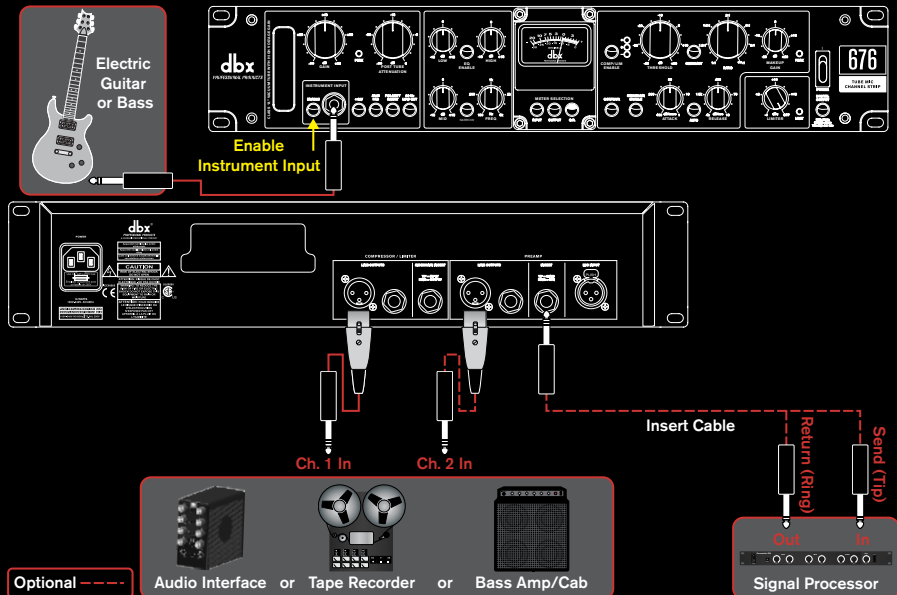
CONNECTION DIAGRAMS

Connect a favorite signal processor to the PREAMP INSERT jack. Use the PREAMP output in combination with the COMPRESSOR/LIMITER output for parallel compression applications or to provide an uncompressed backup signal.

MIC/STAGE DI APPLICATION



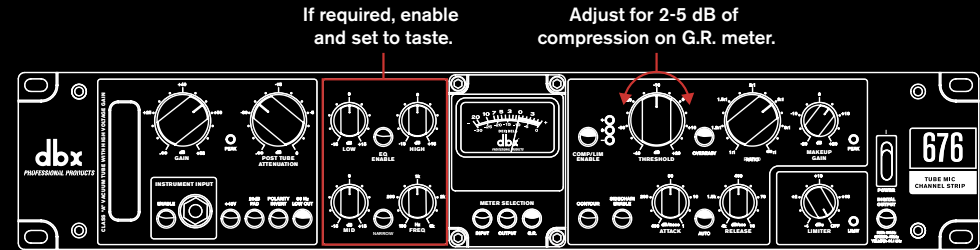
DIRECT INSTRUMENT APPLICATION



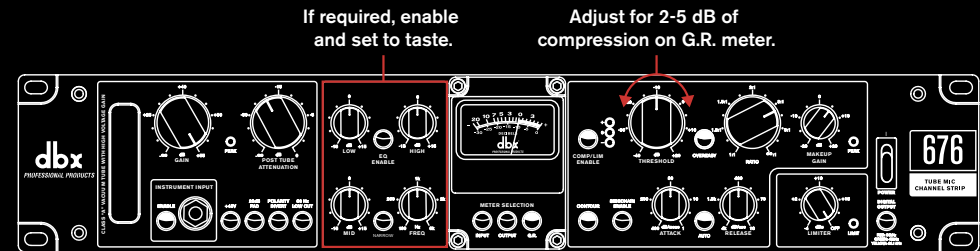
EXAMPLE SETTINGS

Use the below settings as a starting point. For further information on setting the controls, please see the 676 owner's manual available online at dbxpro.com.

VOCALS



DIRECT BASS



ACOUSTIC GUITAR

