

# **EQUINOX**

## **Event Booth**

### **User Manual**



**Order code: EQLED049**

### WARNING

**FOR YOUR OWN SAFETY, PLEASE READ THIS USER MANUAL CAREFULLY BEFORE YOUR INITIAL START-UP!**



- Site the booth on a level, stable surface
- Booth must be unfolded and setup as per diagram overleaf.
- Incorrect setup may lead to additional stress on the frame and components.
- Take care to keep fingers, body parts and loose clothing away from moving parts
- Main shelf loading: 25kg max. (evenly distributed), top shelf loading: 10kg
- Do not stand or sit on the shelf

### Event Booth

A compact and portable foldable DJ stand supplied with steel shelf, white panels, shelves and a carry bags. The Equinox Event booth offers a fresh approach to DJ booths where the mesh upper facade provides some privacy to hide cables and connections without totally blocking the DJ from view.

Specifications	
Dimensions	940 x 990 x 110mm (folded) 1075 x 1150 x 520mm (set-up) 910 x 990 x 490mm (internal)
Shelf height	940mm
Shelf dimensions	20 x 988 x 495mm
Shelf max. load	25kg (shelf); 10kg (top shelf)
Frame weight	23.6kg
Shelf weight	4.6kg
Weight	34kg
Order code	EQLED049

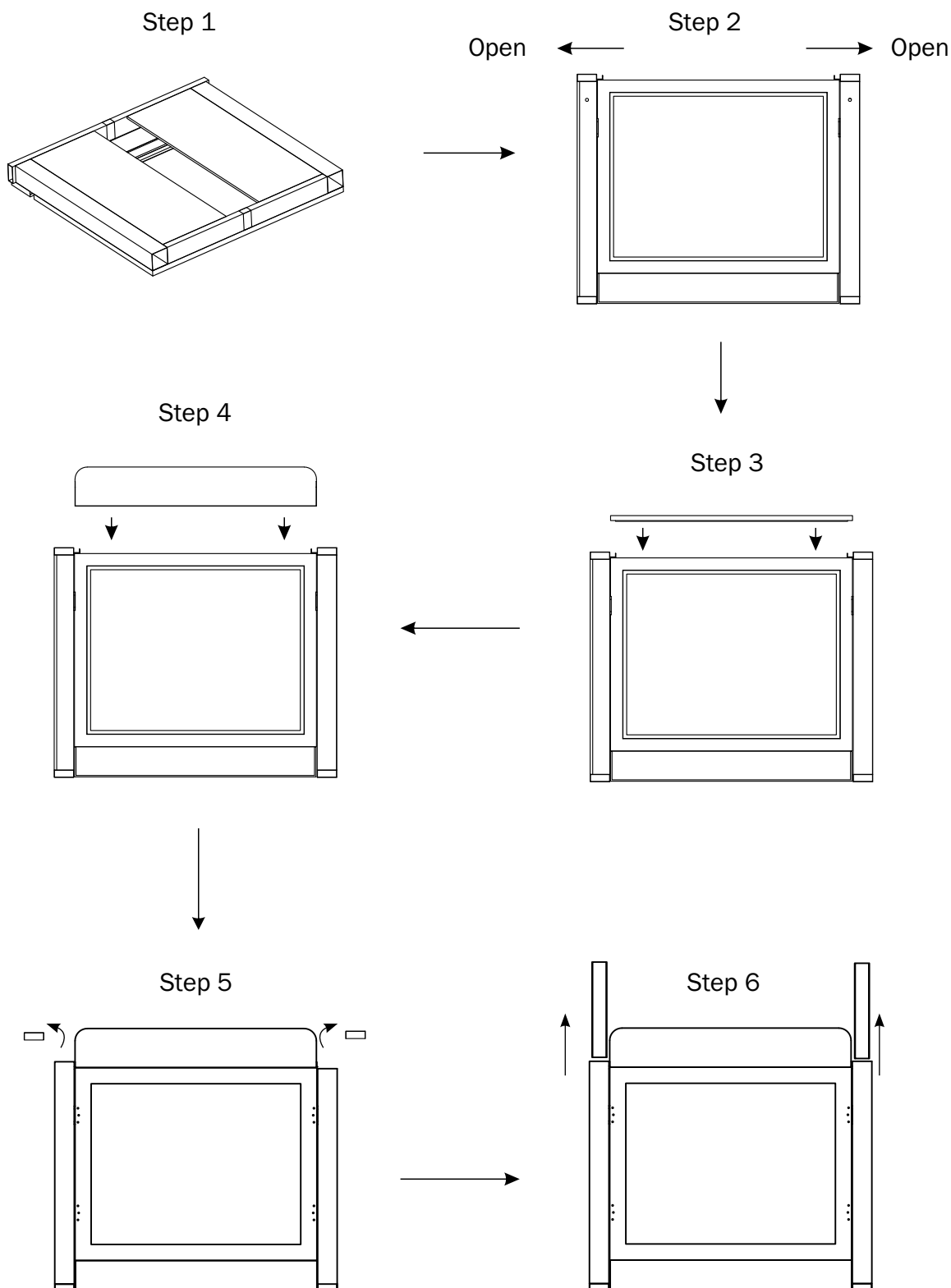


Includes sturdy shelf to support a variety of equipment

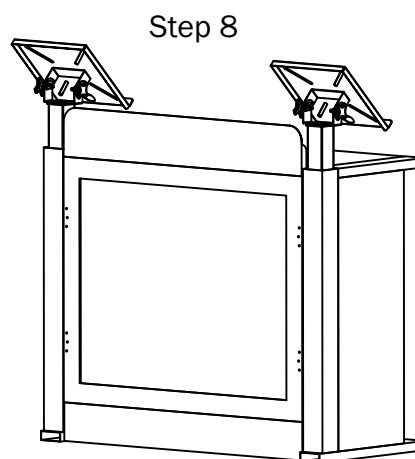
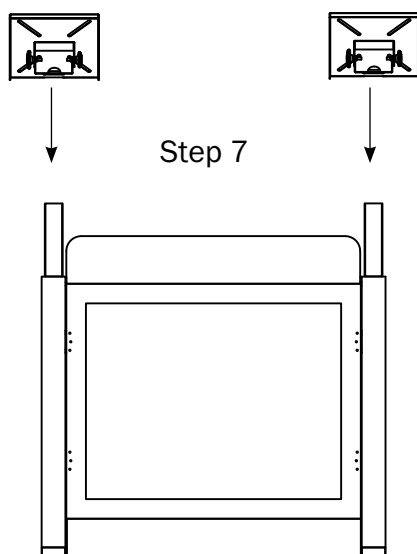


Carry Bags Included

To set up the Event Booth correctly, please follow the 8 steps below.



To set up the Event Booth correctly, please follow the 8 steps below.



Video instructions: [EQUINOX EVENT BOOTH](#)