



CE UK CA   IP20

XH10027

**Xmas Haus 1.5m 3D
RGB Bluetooth Smart
Christmas Tree with
Remote Control
(App compatible)**



A product video
with assembly
instructions can be
viewed by scanning
the QR code



NO TOOLS REQUIRED



Instruction Manual

This manual forms part of the product and should be kept with the unit at all times. Should the unit be sold or moved on then the manual must be included.

Electrovision Ltd
Lancots lane, Sutton, St. Helens, WA9 3EX
sales@electrovision.co.uk

SAFETY

Please read these instructions carefully before use.

This product and its power supply must be checked for any signs of damage before use. If any is detected then do not use and contact your supplier.

- This unit can be used by children aged from 8 years and above and persons with reduced physical, sensory or mental capabilities or lack of experience and knowledge if they have been given supervision or instruction concerning use of the unit in a safe way and understand the hazards involved.
- Children shall not play with the unit.
- The lighting chain can be used outdoors, however, the transformer **MUST** remain indoors at all times.
- Do not use the power supply in locations where paint, petrol or other flammable liquids are used or stored.
- Please ensure the unit is switched off and unplugged when not in use.
- For Domestic Use Only.
- Periodically check this product and its power supply for any signs of damage. If any damage is detected stop using it immediately and consult your supplier.
- Only use the power supply provided with this product
- Do not leave this product unattended when in use.
- This unit must be positioned on a flat stable surface.
- There are no user serviceable parts in this product.
- Do not move or knock this product while in use.
- Do Not Cover.
- Do not connect this product while it is still in its packaging.
- Do not allow any part of this product to come into contact with direct heat or a naked flame. RISK OF FIRE.
- Do not use the transformer in damp or wet locations.
- For decorative purposes only
- Keep away from animals and children - trip and strangulation hazard

**Do not use this product
with the USB output from a
computer or similar device**

**Only use this product with a
good quality approved USB
power supply**

ASSEMBLY

NOTE: Do not switch this unit on until the unit is assembled and is correctly positioned

- Construction and installation of this product should only be undertaken by a competent person after surveying the site to make sure it is suitable
- To prevent damage take down in windy or very cold conditions
- Make sure the product is stable and upright before use.
- Secure the product in place with pegs, ties or sandbags if necessary
- Any use of ladders should only be undertaken by a competent person
- Make sure any trailing leads are secured in place and are not a trip hazard

Please consult the diagram opposite (fig. 1) when assembling this product

1. Connect the 4 curved base pieces (C) to the 4 legs (E)
2. Join the centre of the legs (E) by pushing part F through the legs and attach part G on the underside
3. Connect the 4 upright sections (D) together using a collar (H) between each section
4. Attach the clips (K) to the outer ring of the base, ensuring they click into place. Use 4 clips per section, spacing evenly for a better finish
5. Drape the lights (B) over the assembled upright and attach the star (A) to the top
6. Connect the power lead from the star to the power lead of the lights
7. Stretch the string lights down and attach to the hooks on the base (K)
8. 4 ground pegs are supplied (J) for outdoor fixing into soft ground, there are 4 corresponding holes on the base

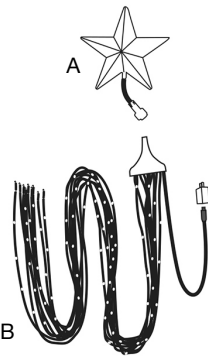
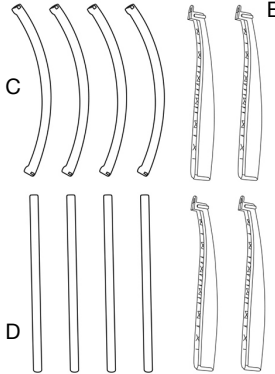


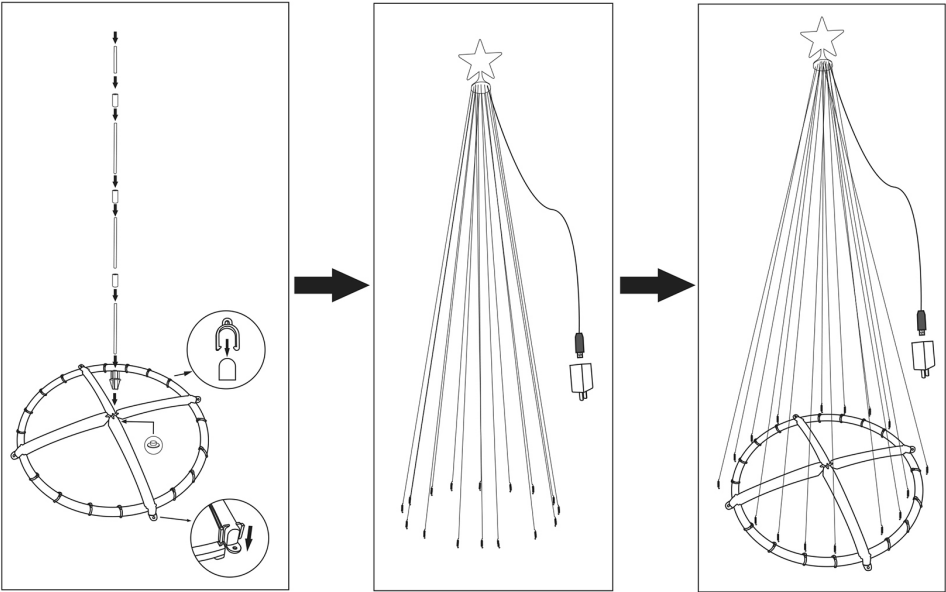
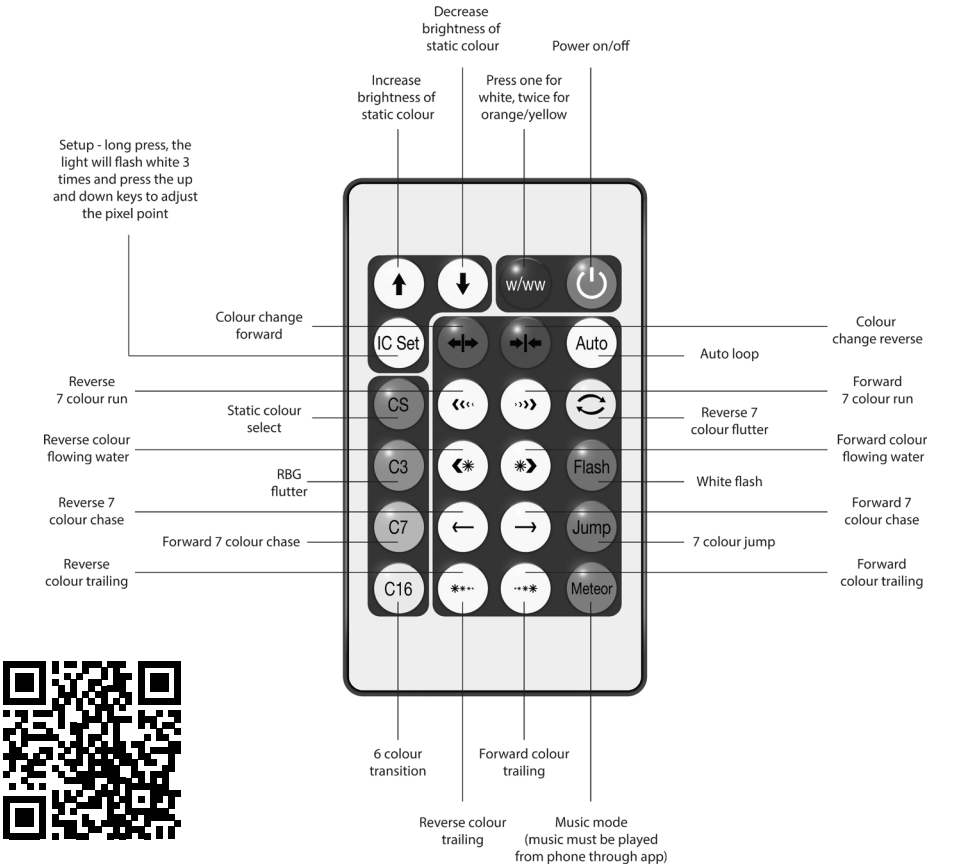
PARTS LIST			
 <p>A</p> <p>B</p>	 <p>C</p> <p>D</p> <p>E</p>	 <p>F</p> <p>G</p>	 <p>K</p> <p>H</p> <p>J</p>

Fig. 1



OPERATION

This USB powered LED Christmas tree can be controlled via the remote control provide or via the downloadable app. Just scan the QR code below and follow the instructions built into the app. The use of the app will give the user maximum control over the product and features a timer. However, the remote control can also be used to access most of the features of the product;



MAINTENANCE AND CLEANING

There are no user serviceable parts in this product. Any maintenance must be carried out by a qualified and approved supplier.

- The item must be switched off and disconnected from the mains before cleaning.
- Clean on with a slightly damp cloth.
- Dust and debris can be removed using a soft bristle brush.

SPECIFICATIONS

Power DC 5V USB

USB POWER SUPPLY NOT SUPPLIED